

# SHARPENING JIG

Version 2.0

## Safety First



Disconnect saw from power source before fitting or removing insert.



Always wear proper ear protection when working with machinery.



Use caution when handling sharp objects (saw blades, router bits, drill bits and so on). Use protective gloves whenever possible.



Always wear proper eye protection when working with machinery and tools.



Always wear proper respiratory protection when working near airborne dust particles.

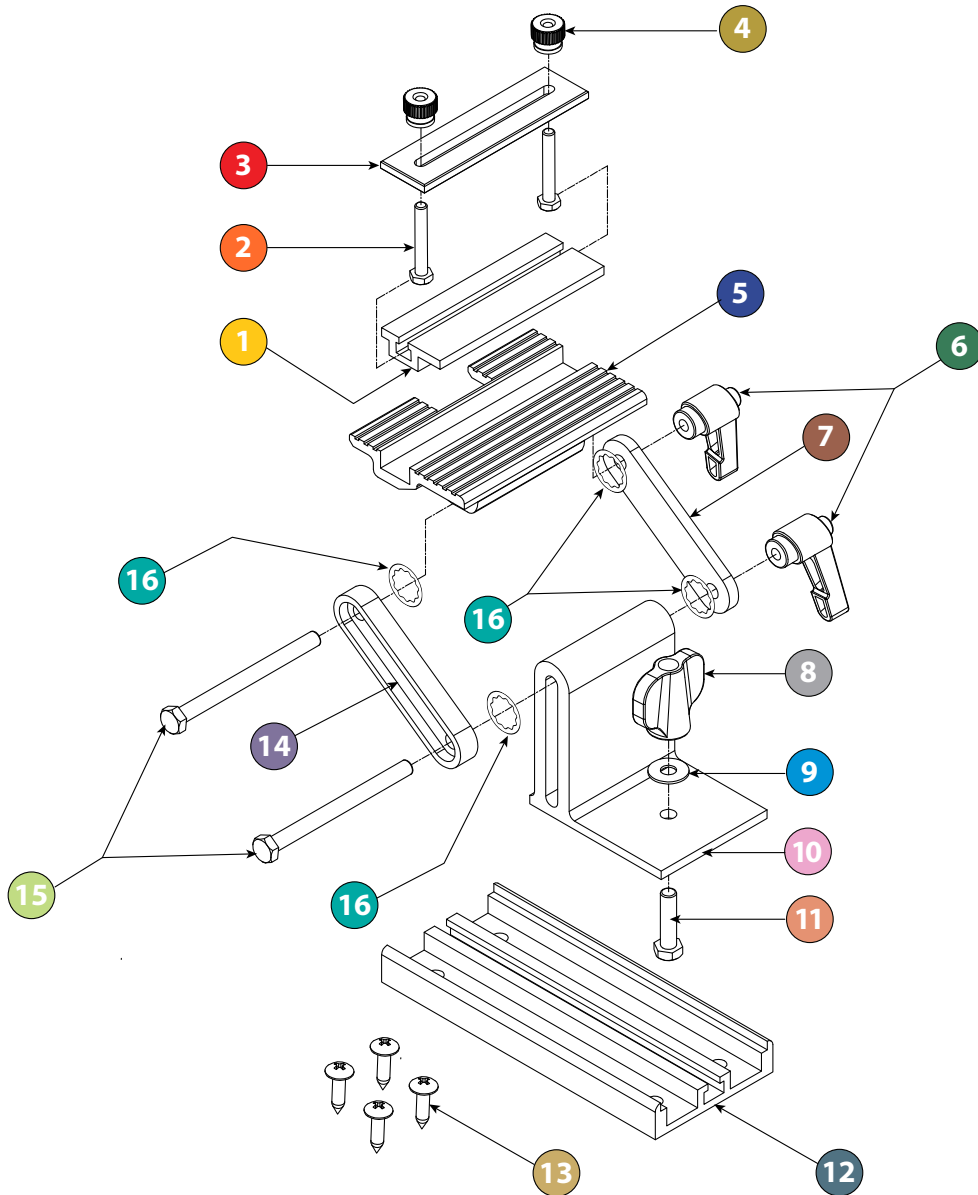
*Please read and fully understand any and all safety materials that came with your power tools or machinery before operation. Always follow all safety guidelines set in place by the power tool or machine manufacturer.*



**NEW!**  
**Internal Lock Washers for Extra Stability!**

# ADJUSTABLE REPLACEMENT TOOL REST SHARPENING JIG

## PARTS



No.	Description	Qty
1	Flat Miter Slide	1
2	Miter Slide Bolt	2
3	Hold Down Plate	1
4	Brass Knurled Nut	2
5	Sharpening Table	1
6	1/4"x20 Ratcheting Knobs	2
7	Solid Bracket Arm	1
8	Large Wing Knob	1
9	Washer	1
10	Table Base	1
11	Table Base Bolt	1
12	Mounting Track	1
13	Wood Screws	4
14	Recessed Bracket Arm	1
15	Bracket Arm Bolts	2
16	Internal Lock Washer	4

### NEW Internal Lock Washers for Extra Stability

Before using, you may need to partially disassemble the jig and insert the Internal Lock Washers (16) as shown above. The washers help keep the arms and platform from inadvertently moving or shifting while in use.

### Assemble the Tool Rest Sharpening Jig

Using the exploded view drawing as a guide, assemble the Tool Rest Sharpening Jig as shown. Keep in mind while putting the jig together that parts 12 and 13 will not be used in this step. We will address the Mounting Track and the wood screws further along in these instructions.

## 1. Bench Grinder Preparation



### Standard Plywood Mount

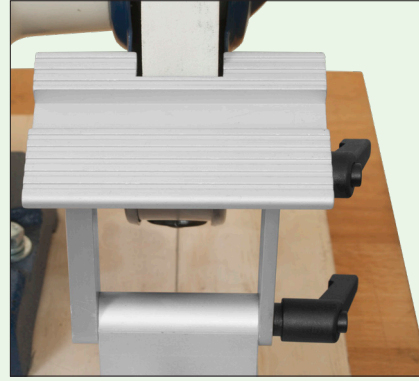
Typically when using a bench top grinder, it is recommended that you attach it to at least a 3/4" thick piece of plywood that is larger than the footprint of the grinder itself.



### Raised Plywood Mount

Depending on your grinder height you may also need to raise the grinder with a piece of wood on top of the original plywood base in order to properly reach the grinding wheels with the Tool Rest Sharpening Jig.

## 3. Attach the Mounting Track



### Align the Tool Rest

Slide the Tool Rest into a track and secure with wing knob. Align the center of the track and jig to the first line made. The jig should align with the table center cut out as shown here.



### Secure the Track to the Base

Secure the track to your wooden base with the four wood screws provided.

## 2. Alignment for the Mounting Track



### First Grinding Wheel

Once your grinder is mounted to a piece of plywood, mark the center point of the grinding wheel on to the plywood as shown here.

### Shop Tip...

When locating the center of the grinding wheel, we recommend using a Tri-Square (Not Included). This type square allows you to align and mark at the same time making it much easier to align.

## 4. Adjust as Needed

### Adjustable Angles



From top to bottom the tool rest is completely adjustable to accommodate most any angle you can throw at it. The ratcheting knobs make adjusting for angles super quick and easy

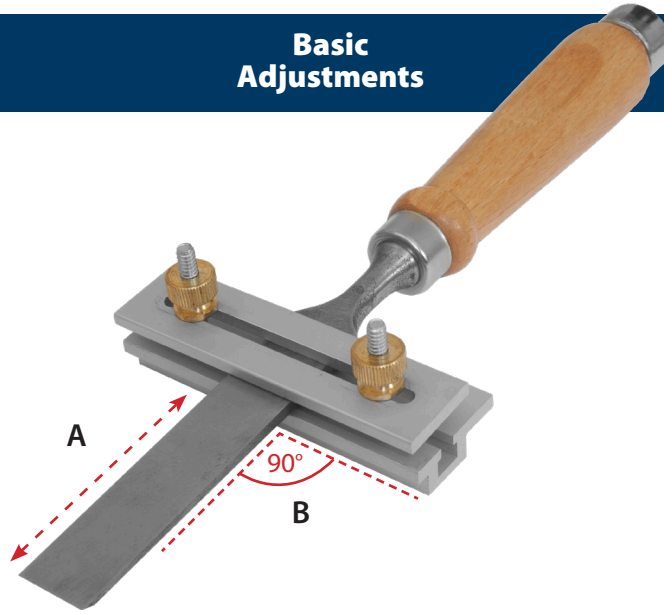
### Slide Inward or Outward



The mounting track is essentially a t-style track that allows you to slide the tool rest assembly in and out as needed. This provides with a big advantage of other styles of tools rests that are fixed base systems.

# Flat Miter Slide Use

## Basic Adjustments



The sharpening jig comes with a unique Flat Miter Slide assembly that gives you the ability to slide your tool side to side while sharpening. Doing this helps produce a clean, smooth, even edge regardless of what type of tool you need to sharpen. Place your tool into the slider assembly and adjust the tool either forward or backward (A) inside of the slider assembly depending on the tool length, square the tool (B) to the slider assembly and secure. Place your tool and the slot slide assembly into the slot on the jig platform, adjust the jig to the correct distance and angle and start sharpening your tool by sliding the tool and the Flat Miter Slide assembly side to side until you achieve the desired results.

## Side To Side



The slot assembly allows you to remove your tool from the platform for checking your progress. Once you have checked your tool you can go right back to sharpening without losing your angle or make necessary adjustments on the fly.